

PART OF THE SW.1/4, OF SECTION 28, T.6N., R.2W., S.L.B. & M.  
CALMING WATERS AT PETERSON ESTATES

IN WEBER COUNTY  
SCALE 1" = 30'

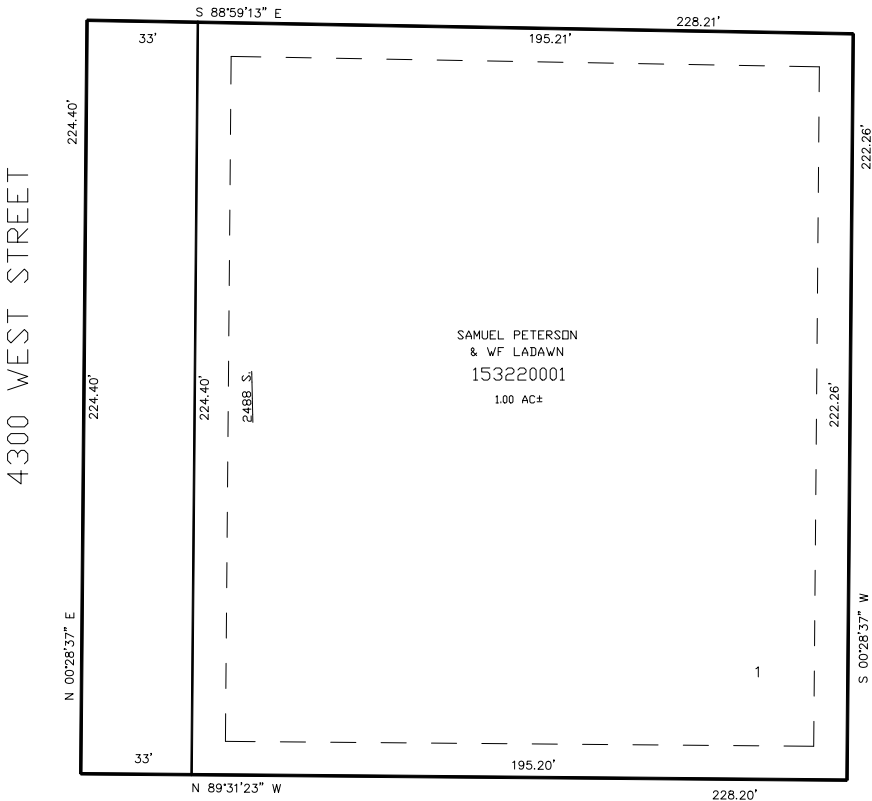
TAXING UNIT: 516

SEE PAGE 304

2475 SOUTH STREET

SEE PAGE 79-1

SEE PAGE 78-3



SEE PAGE 78-3

FOR COMPLETE ENG DATA SEE  
ORIGINAL DEDICATION PLAT IN  
BOOK 55, PAGE 82 OF RECORDS.

10' UTILITY & DRAINAGE EASEMENTS EACH  
SIDE OF PROPERTY LINES AS INDICATED  
BY DASHED LINES EXCEPT AS OTHERWISE  
SHOWN.